

Thames River Basin Partnership



Floating Workshop XVIII

River Continuity and Thames River Cruise

TRBP Floating Workshop XVIII Sponsors

This workshop is sponsored in part by Millennium Power through The Last Green Valley and in partnership with the Eastern Connecticut Conservation District.

Additional Sponsors include:

- Project Oceanology
- Chelsea Groton Foundation
- CT Department of Energy and Environmental Protection
- Connecticut Sea Grant
- United States Geological Survey
- Connecticut Audubon Society



Who are the Thames River Basin Partners?



Government and non-profit organizations, educational institutions, industries and municipalities with a shared focus on natural resource conservation in the greater Thames River watershed basin.





Thames River Basin Partnership

Our Mission

- **Protect the region's agricultural and natural areas being threatened by land use changes.**
- **Protect ground and surface water quantity and quality being threatened and degraded by contamination.**
- **Protect the region's biodiversity.**
- **Improve the coastal zone resource conditions.**

The Thames River Basin Partnership is a voluntary, cooperative effort to share organizational resources and to develop a regional approach to natural resource protection. The partnership grew out of locally led workshops held by the region's Soil and Water Conservation Districts.



The Workshop was hosted by Project Oceanology



<http://www.oceanology.org>

1084 Shennecossett Road, Groton, Connecticut, 06340

Welcome by Jean Pillo, TRBP Coordinator



Keynote Speaker was Brian Murphy CT DEEP Department of Inland Fisheries



Moosup River Dam Removal Project

Plainfield, CT

Project Partners

DEEP, Fisheries Division
USDA, Natural Resources Conservation Service
American Rivers
Town of Plainfield
Princeton Hydro, Project Engineer and Consultant

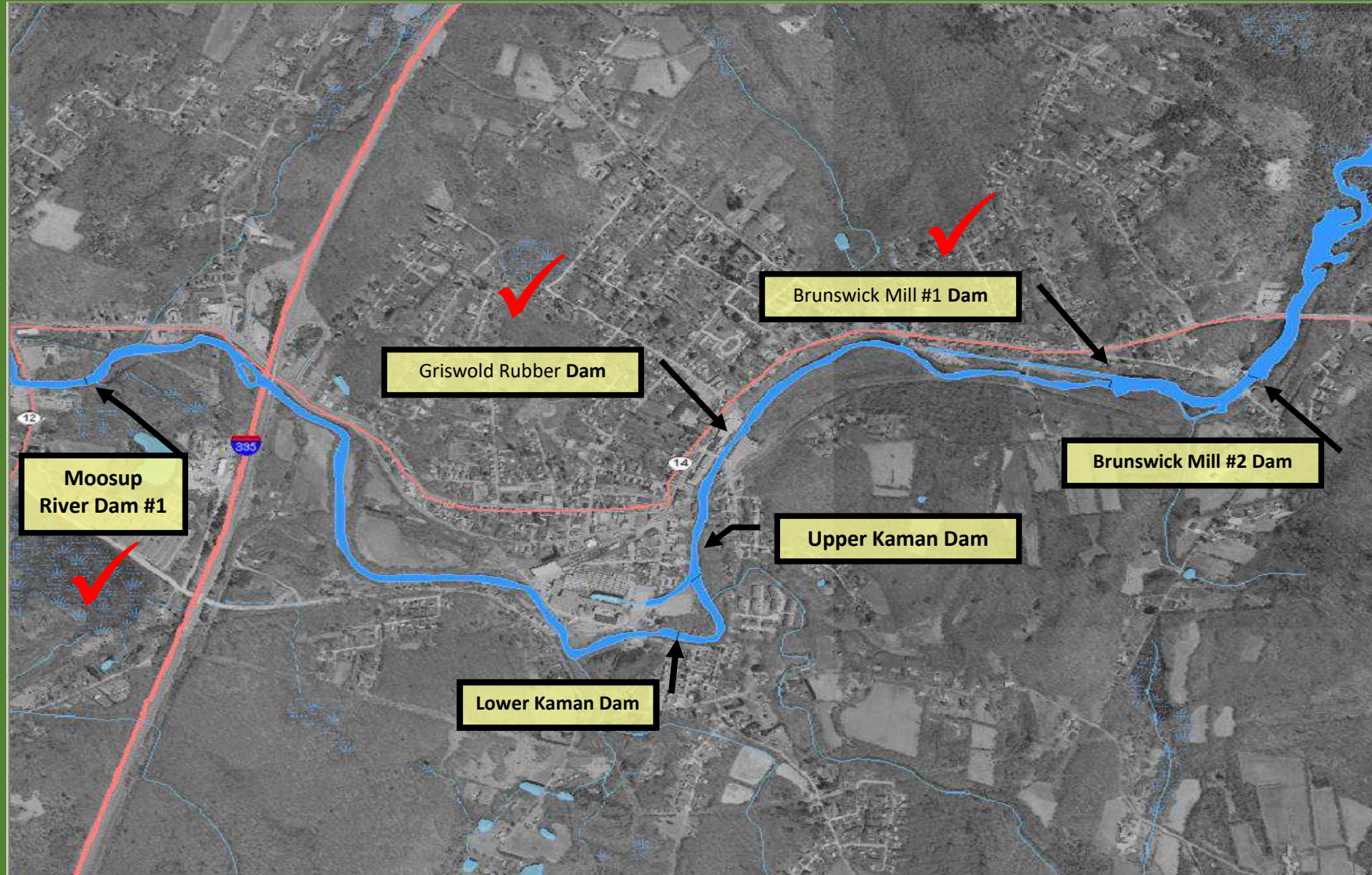
Funding

Millennium Power Partners : Natural Gas Power Plant,
Quinebaug River, Charlton, MA

Mitigation Funding Per Conditions of Regulatory Water Quality Permit in
1998 / Mitigation Monies in 2010

(Millennium also funded Hamant Dam Removal (2017) Sturbridge, MA)

Moosup River Dam Removal Project



Moosup River Dam #1 Removal Project : 2014

Photodocumentation looking Across River



Pre-Removal



Post-Removal

Griswold Rubber Dam Removal : 2015



Pre-Removal



Post-Removal

Brunswick Mill Dam # 1

Across River View : Pre-Removal



Across River View : Post-Removal



Connecticut Stream Crossing Guidelines

Facilitating Fish Passage and Stream Connectivity

P
a
r
t

2



Sub Standard Culverts Create Barriers to Upstream Fish Passage



DEP Stream Crossing Guidelines Publication: 2008



Inland Fisheries Division
Habitat Conservation and Enhancement Program

Stream Crossing Guidelines



Available on
DEEP website

Purpose of Guidelines

- Our primary goal to provide **fish passage** in perennial streams Entire community not just a single species.
- Fish passage for intermittent streams evaluated based upon seasonal utilization of fish - case by case basis.
- Well designed crossing should be “invisible” to resources that pass through.
- Guidelines incorporated as part of US Army Corps of Engineer CT Regulatory Permit Requirements

DEEP Fisheries Program Technical Guidance

- Available for on-site consultations as schedule permits; re. Stream crossings or any development projects that may impact fish resources.
- Stream crossing projects best to request assistance during the preliminary design phase.

Transitioning to our Thames River Cruise



The Envirolab III is a 50 passenger research vessel/floating classroom operated by Project Oceanology.



The Project O crew primed us on where we were headed.



**Dr. Molly Jacobs, Director of
Curriculum and Instruction**



**Debbie Sayer,
Marine Science Educator**

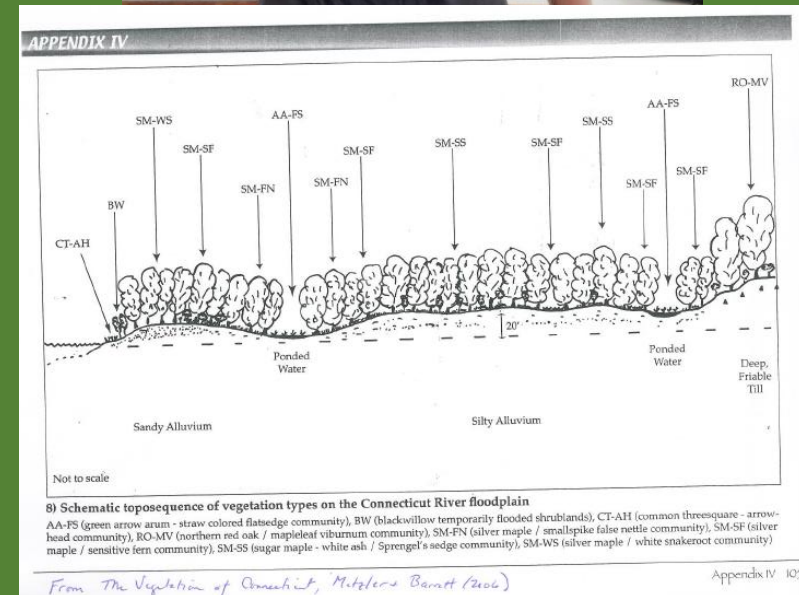
Two perspectives on riverine flood plains were presented

Andrew Massey, USGS - New England Water Science Center
Thames River and Shetucket Watershed Flood Insurance Study

Julianna Barrett, CT Sea Grant
Floodplain natural functions and ecology



When you build on a flood plain, there is always a flood risk. Accurate flood plain mapping is important for FEMA to determine flood insurance rates.

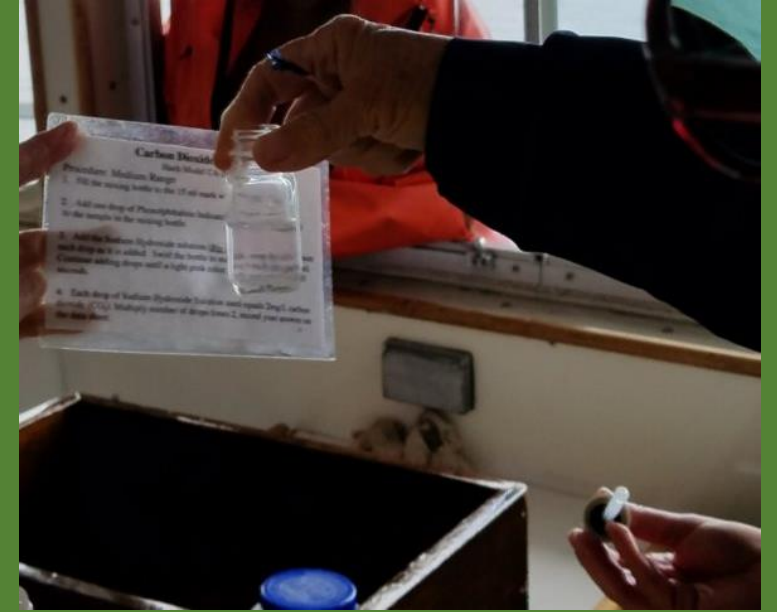
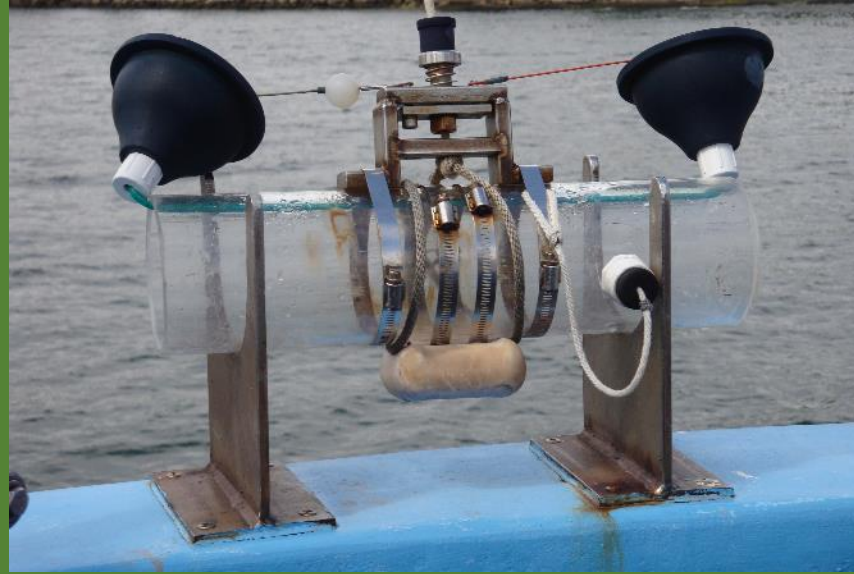


Our second stop included hands on experiences with bottom muck sampling.



It's not mud,
it's habitat!

Thames River water quality testing group





For more information about TRBP, contact:

Jean Pillo, TRBP Coordinator

PO Box 11

218 Day Road

Pomfret Center, CT

860-928-4948 extension 605

Email: Jean.Pillo@Comcast.net

