

# Thames River Basin Partnership



Floating Workshop XIX  
Discover the Yantic River  
Trout Management and Water Quality



# Thames River Basin Partnership

## Our Mission

- Protect the region's agricultural and natural areas being threatened by land use changes.
- Protect ground and surface water quantity and quality being threatened and degraded by contamination.
- Protect the region's biodiversity.
- Improve the coastal zone resource conditions.



Please "like" us on Facebook to get regular Partner updates.

# Who are the Thames River Basin Partners?



Government and non-profit organizations, educational institutions, industries and municipalities with a shared focus on natural resource conservation in the greater Thames River watershed basin.



# TRBP Floating Workshop XVIII Sponsors

This workshop is sponsored in part by Millennium Power through The Last Green Valley and in partnership with the Eastern Connecticut Conservation District.

Additional Sponsors include:

- CT Department of Energy and Environmental Protection
- Project Oceanology
- Trout Unlimited, Thames Valley Chapter
- Lebanon IWC
- City of Norwich
- Connecticut Audubon Society



# TRBP Floating Workshop 19

## Planning Committee

- Gary Lussier, Thames Valley Chapter, Trout Unlimited
- Dennis Latchum, Lebanon Inland Wetlands Commission
- Molly Jacobs - Project Oceanology
- Jean Pillo - Eastern Connecticut Conservation District





# TLGV Volunteer Water Quality Monitoring Program Scholarship for TRBP FW XIX





River Thames - it goes by many names  
North of Norwich where it drains The Last  
Green Valley

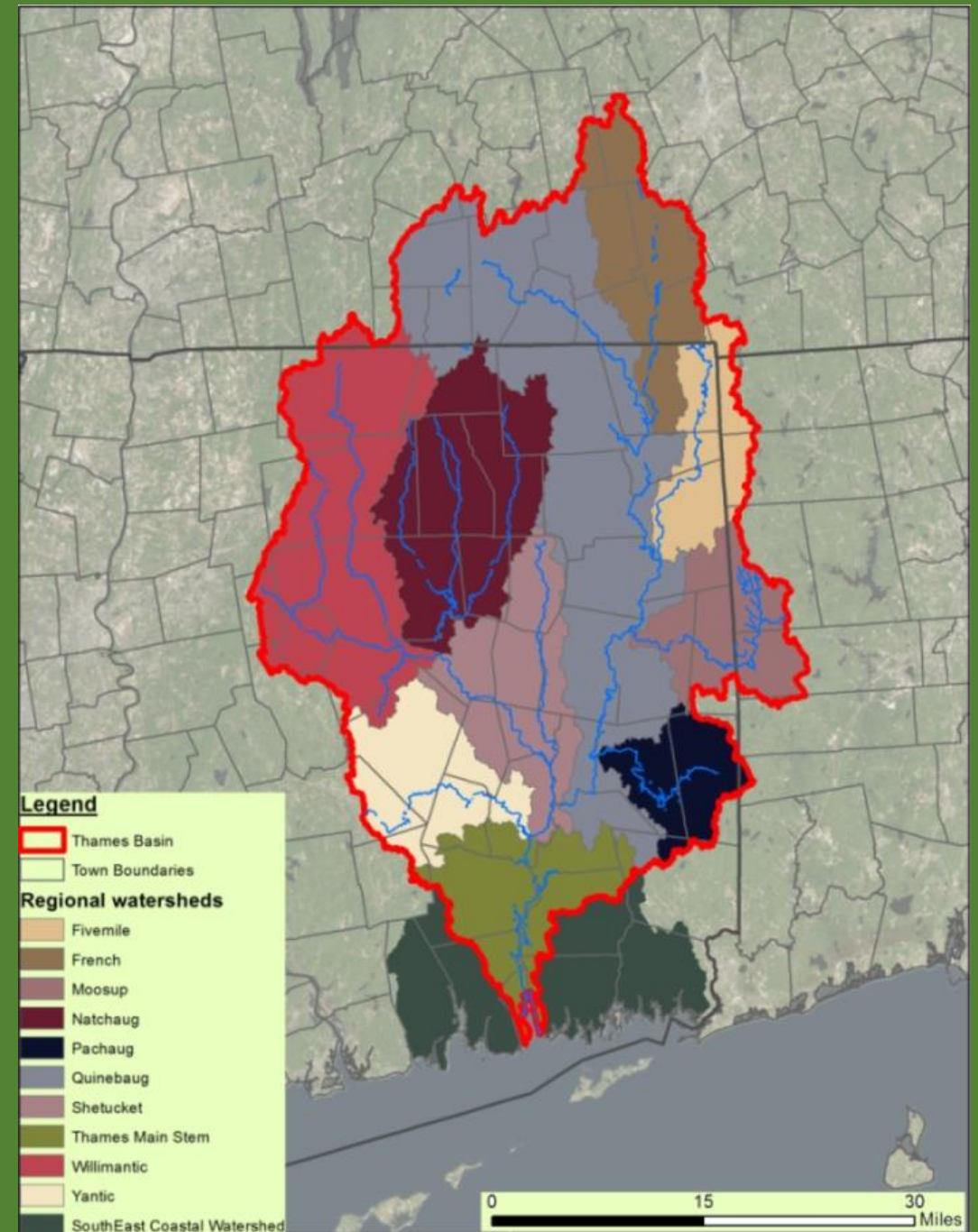




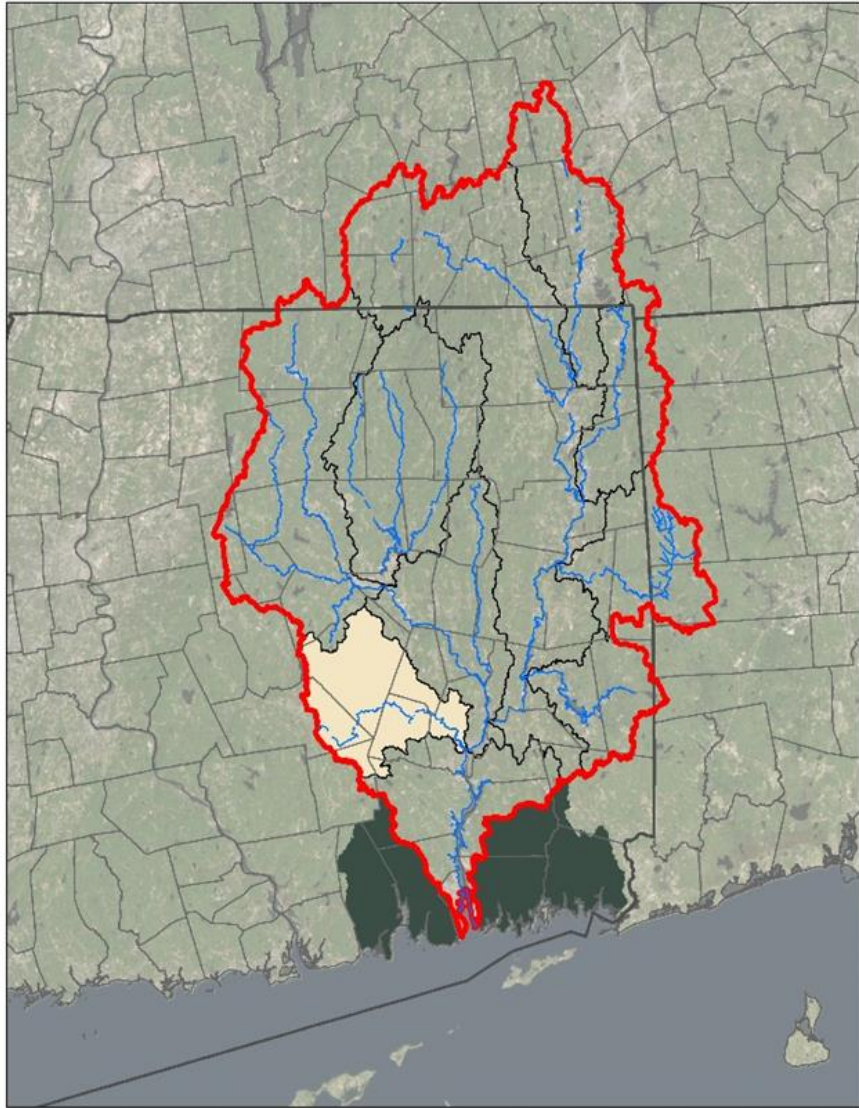
Unlike the other  
Connecticut big rivers  
with the same name  
from source to sea



The Thames River has nine upper watershed identities.



## Thames Basin Watershed

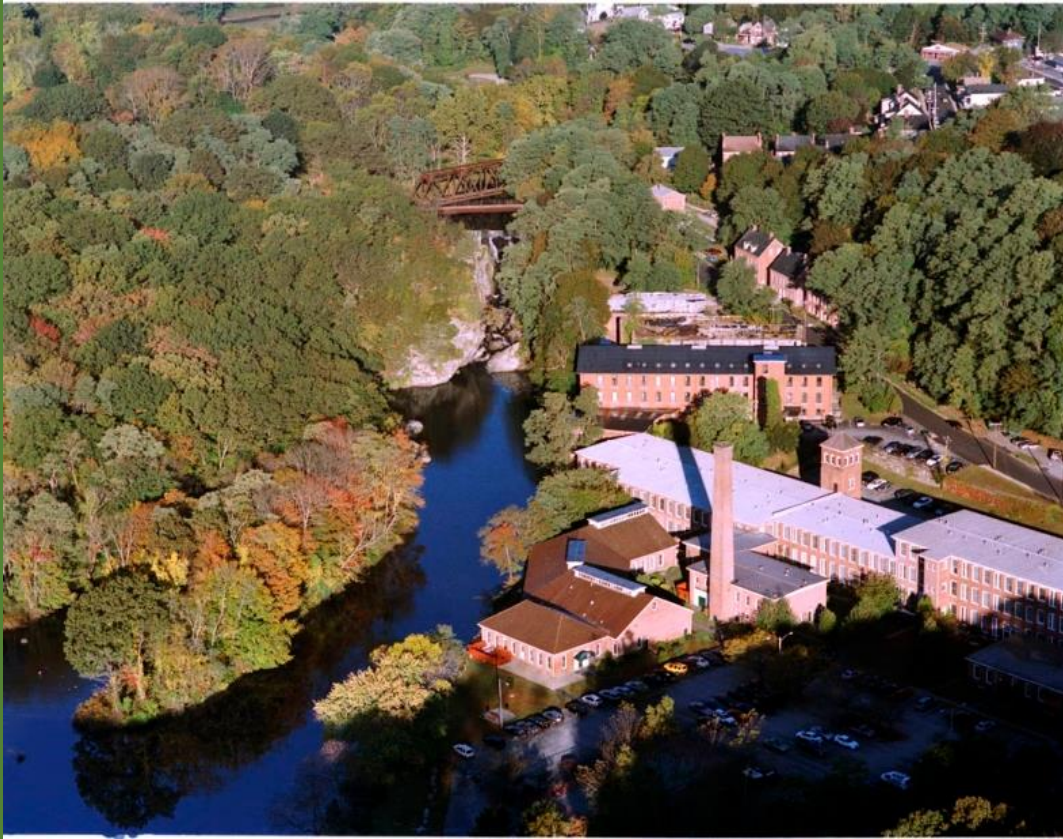


# Discovering the Yantic River

The Yantic River begins in Lebanon, CT and converges with the Shetucket River at Norwich Harbor, which is the start of the Thames River.



# Discovering the Yantic River



Aerial photo by G. Leslie Sweetnam

On the morning of the Floating Workshop, some participants took part in an optional morning paddle or hike in the lower Yantic River area.

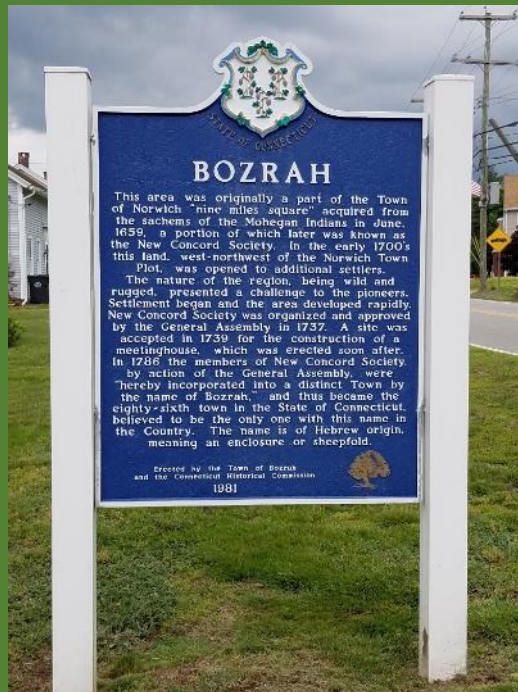








On to the Bozrah Town Hall where the Floating Workshop attendees were welcomed by First Selectman Glenn Pianka.





# The Keynote Address was presented Neal Hagstrom of CT DEEP Fisheries





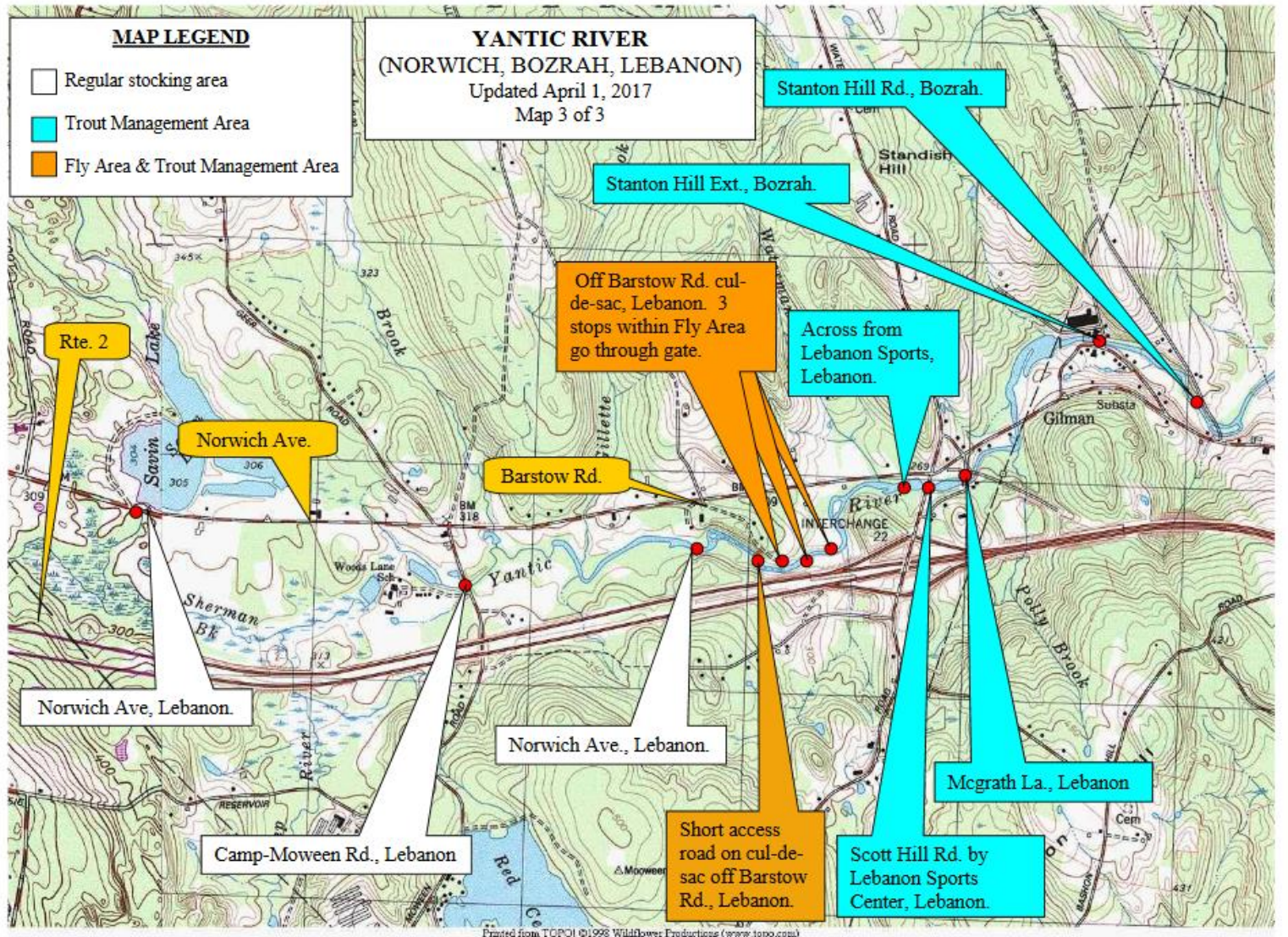
# What we learned

- The Yantic River is maintained as a seasonal trout fishery.
- Summer water temperatures in the Yantic River are too warm to sustain trout.
- The CT Trout and Salmon Stamp, new in 2018, helps to subsidize the cost of the trout and salmon stocking program, and is required for anglers fishing in any designated Trout Management Area, Wild Trout Management Area, Trout Park, or Atlantic Salmon Broodstock Area and for anglers harvesting trout or salmon anywhere throughout the state.





# Yantic River Trout Management Area





# Threats to Trout

- Habitat fragmentation due to improperly designed culverts
- Increasing water temperatures
- Flash runoff events altering stream temperature and/or bottom substrate composition
- Loss of riparian cover
- Toxic metals in stormwater runoff



Once outside, Dan Mullins of the Eastern Connecticut Conservation District showcased a recently installed Rain Garden at the Bozrah Town Hall designed to capture and infiltrate parking lot runoff before it flows into the Yantic River.





Next, Workshop attendees participated in field events at the Bozrah Hay Field/ River Park on Stockhouse Road



Dennis Latchum of the Lebanon Inland Wetlands Commission and Gary Lussier of Thames Valley Trout Unlimited demonstrated how to use stream insects as water quality indicators using a Riffle Bioassessment, a water quality monitoring technique developed CT DEEP to be a type water quality monitoring program for volunteer .

Station 1: Riffle Bioassessment demonstration

# Bugs as bio-indicators

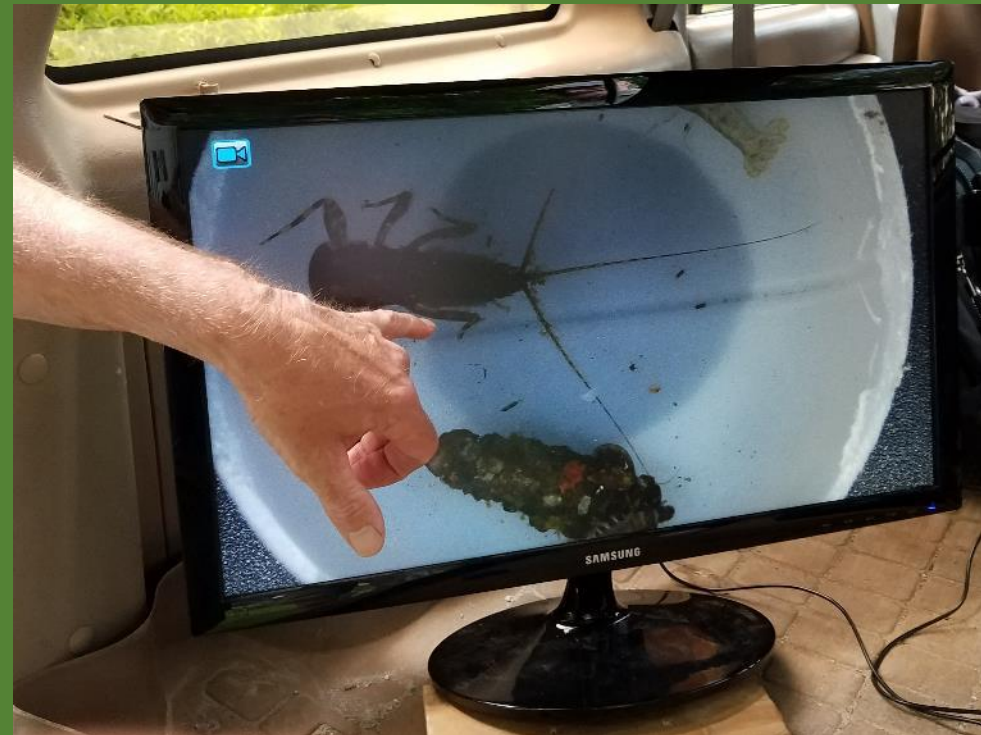
Certain insects live a portion of their life underwater. They may be highly impacted by water pollution, making them the “canary in a coal mine” for water quality. If there is an abundance of pollution sensitive types in a water sample, then it can be inferred that the water quality supports them and other sensitive aquatic species.







Getting a close up  
look at the critters  
that live in the  
Yantic River.





# Station 2: Fly Fishing Demonstration by Thames Valley Chapter of Trout Unlimited



Fly tying demonstration



The flies are designed to mimic what is in the river that the fish would normally be feeding on and changes by fish type and season of the year.





# Fly Fishing Lessons

A very patient team of TVTU volunteers attempted to teach the workshop attendees the fine skill of fly casting.





# Station 3: Water Chemistry Testing



Kyle Swan, an Educator with Project Oceanology, taught about water quality through a demonstration of water chemistry, a determining factor for what kinds of fish and bugs can live in the water.



# For more information about TRBP, contact:

Jean Pillo, TRBP Coordinator

PO Box 11

218 Day Road

Pomfret Center, CT 06259

860-928-4948 extension 605

Email: [Jean.Pillo@Comcast.net](mailto:Jean.Pillo@Comcast.net)