

# Thames River Basin Partnership Floating Workshop XII

June 22, 2012

The Willimantic River  
Forty After Years  
the Clean Water Act

Mansfield, CT



Photo courtesy of [www.glsweetnam.com](http://www.glsweetnam.com)



# TRBP FLOATING WORKSHOP XII



UConn Coop  
Ext System



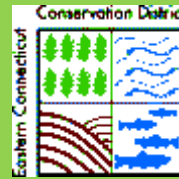
Thank you to our sponsors and supporters!

# Floating Workshop XII

## Planning Committee

- Jana Butts, WinCOG
- Marc Cohen, Callidity Consulting
- Jean Pillo, ECCD
- Meg Reich and Vicky Wetherell, Willimantic River Alliance
- Anne Roberts Pierson, Avalonia Land Conservancy and ECCD Board Member
- Eric Thomas, CT DEEP
- Bev Thornton, Brooklyn Conservation Commission and ECCD Board Member

# Who are the Thames River Basin Partners?





# Thames River Basin Partnership

The Thames River Basin Partnership is a voluntary, cooperative effort to share organizational resources and to develop a regional approach to natural resource protection. The partnership grew out of locally led workshops held by the region's Soil and Water Conservation Districts.

## Our Mission

- Protect the region's agricultural and natural areas being threatened by land use changes.
- Protect ground and surface water quantity and quality being threatened and degraded by contamination.
- Protect the region's biodiversity.
- Improve the coastal zone resource conditions



# Thames Watershed

- Thames River main stem flows from Norwich Harbor to Long Island Sound
- The watershed extends into Massachusetts and Rhode Island
- 9 regional river systems drain into the Thames River
- Inland land use practices impact water quality in the Thames River estuary and Long Island Sound

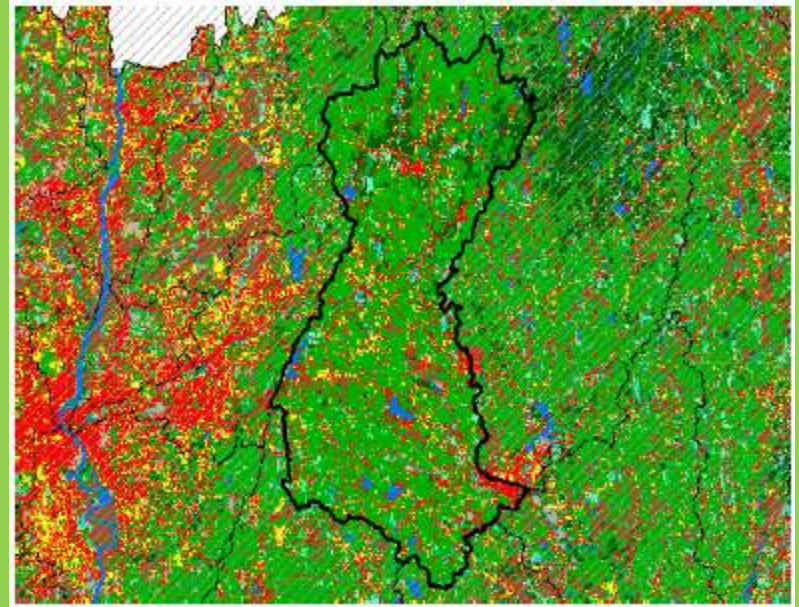
# US EPA Clean Water Act

- Passed in 1972
- Update and expansion of 1948 Federal Water Pollution Control Act
- National Pollutant Discharge Elimination System (NPDES) permitting program
- Very simplified goals - to make all waters « swimmable and fishable »

# The Willimantic River



- 25 miles long
- Begins in Stafford Springs and ends in Willimantic
- Historic connection between the river and mill towns
- The Shetucket River begins where the Willimantic River joins with the Natchaug River



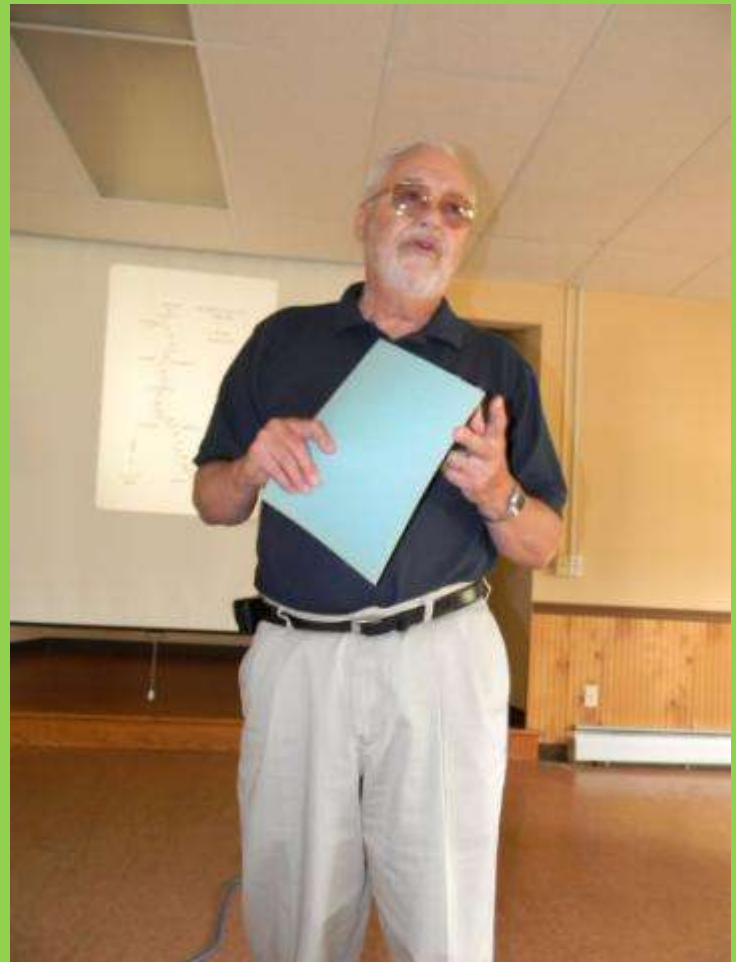
Maps courtesy of the Center for Landuse Education and Research (CLEAR)



# Hugo Thomas

**Former Chair of  
the Willimantic  
River Task Force**

**The Willimantic  
River in the Late  
60's and Early  
70's**



# Meg Reich



Co-founder and  
current VP  
Willimantic River  
Alliance

Who is Minding the  
River Now? An  
introduction to the  
Willimantic River  
Alliance



[www.willimanticriver.org](http://www.willimanticriver.org)

# Spirit of the River Award

**Special Presentation  
to Hugo Thomas by  
the Willimantic River  
Alliance**



# Chris Bellucci



**CT DEEP Bureau  
of Water and  
Land Reuse**

**The Clean Water  
Act in Action,  
the upper  
Willimantic  
TMDL**



# Lois Bruinooge



Deputy Executive  
Director for The Last  
Green Valley, Inc  
Special Announcement  
about the Willimantic  
River Water Trails  
receiving National  
Recreation Trail status by  
the National Park Service  
in May 2012



[www.tlgv.org](http://www.tlgv.org)

# Margaret Thomas



## CT DEEP

### *Glacial Geology of the Willimantic River valley*



# Jason Coite

- UCONN Office of Environmental Policy
- The University of Connecticut response to the Eagleville Brook TMDL for storm water runoff from impervious surfaces



# Ken Pelzar

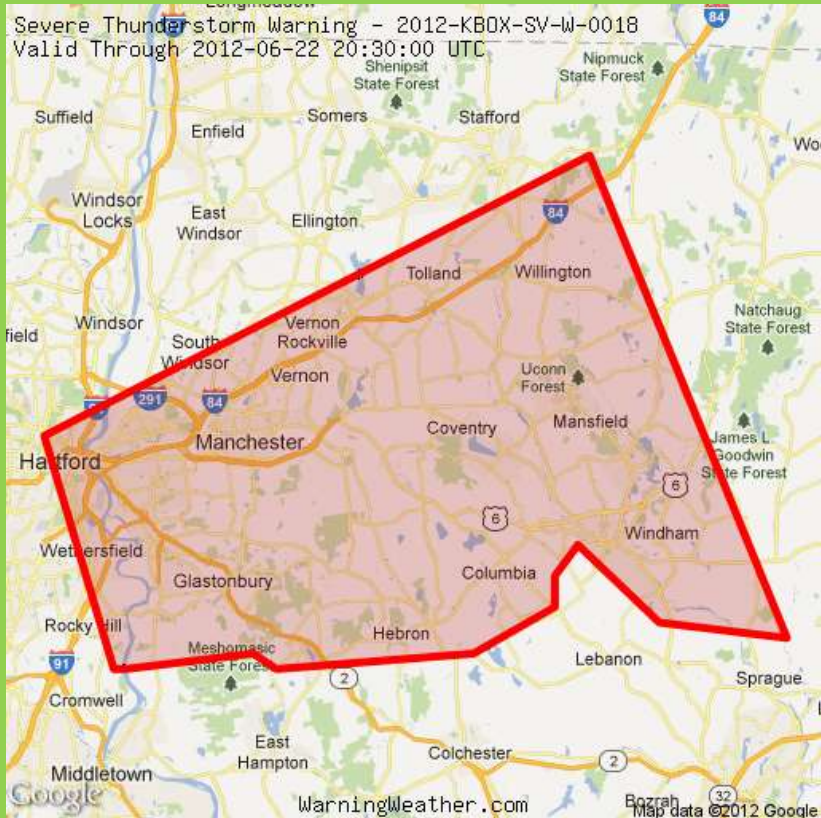
Supervisor UCONN  
WPCF



UCONN wastewater treatment system summary and the transformation of the Depot Campus wastewater treatment facility to a riverside park with a boat launch.



# Unfortunately, rain cancelled the scheduled paddle and hike



We were forced to retreat back to the Eagleville Fire Department

# Alternate Willimantic River Float



Featuring



# Laurie Giannotti

- CT Greenways Coordinator
- Willimantic River Greenway is part of the East Coast Greenway System



Thanks to those that brought posters and other informative materials.





For more information or to get  
involved in future TRBP  
activities, visit our website  
[www.TRBP.org](http://www.TRBP.org)

or contact

**Jean Pillo, Watershed Conservation Coordinator**

**Eastern Connecticut Conservation District**

**860-928-4948 x 605**

**[Jean.Pillo@ConserveCT.org](mailto:Jean.Pillo@ConserveCT.org)**